



TRAINING AND TECHNICAL ASSISTANCE RESOURCE CATALOG

A program of the Children's Bureau (CB), Administration for Children and Families (ACF),
co-funded by the Substance Abuse and Mental Health Services Administration (SAMHSA).

*The materials and resources in this catalog are available at no cost;
please feel free to access them at <https://ncsacw.acf.hhs.gov/>.*



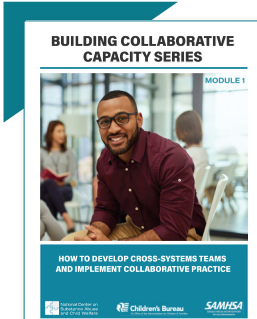
WHO WE ARE

The National Center on Substance Abuse and Child Welfare (NCSACW) is a national resource center providing information, expert consultation, and training and technical assistance to child welfare, dependency court, and substance use and mental health treatment professionals to improve the safety, permanency, well-being, and recovery outcomes for children, parents, and families.

NCSACW's primary goals are to support systems change, improve practice, and reduce stigma related to families affected by substance use and mental disorders. This happens through enhanced agency collaboration based on a shared understanding of the needs and challenges of these families and the systems that serve them.

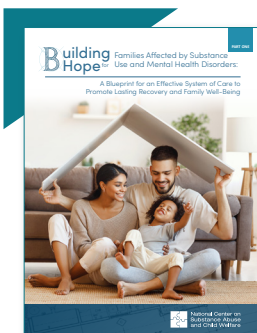
Learn more about NCSACW by viewing our [Who We Are](#) video.

BRINGING SYSTEMS TOGETHER: Build a Collaborative Foundation



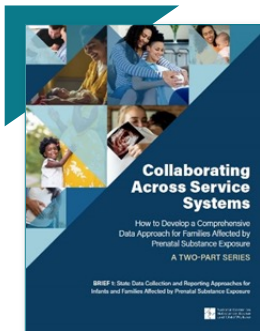
Building Collaborative Capacity Series offers strategies states and communities may use to create cross-system collaborative teams, communication protocols, and practice innovations. These strategies aim to improve screening, assessment, and engagement for families affected by substance use disorders (SUDs) and involved with child welfare.

- Module 1: [*Setting the Collaborative Foundation: Developing the Structure of Collaborative Teams to Serve Families Affected by Substance Use Disorders*](#)
- Module 2: [*Setting the Collaborative Foundation: Addressing Values and Developing Shared Principles and Trust in Collaborative Teams*](#)
- Module 3: [*Setting the Collaborative Foundation: Establishing Practice-Level Communication Pathways and Information-Sharing Protocols*](#)
- Module 4: [*Setting the Collaborative Foundation: Establishing Administrative-Level Data Sharing to Monitor and Evaluate Program Success*](#)
- Module 5: [*Frontline Collaborative Efforts: Developing Screening Protocols to Identify Parental Substance Use Disorders and Related Child and Family Needs*](#)
- Module 6: [*Frontline Collaborative Efforts: Establishing Comprehensive Assessment Procedures and Promoting Family Engagement into Services*](#)
- Module 7: [*Frontline Collaborative Efforts: Developing and Monitoring Joint Case Plans and Promoting Treatment Retention and Positive Family Outcomes*](#)

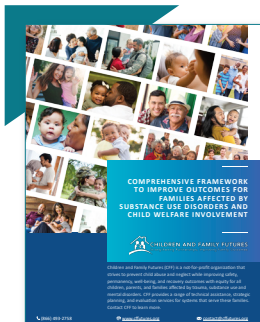


Building Hope for Families Affected by Substance Use and Mental Health Disorders—A Blueprint for an Effective System of Care to Promote Lasting Recovery and Family Well-Being describes concrete strategies collaboratives can use to enhance the system of care while improving outcomes for families affected by SUDs and mental health disorders. The series also shows that “recovery is possible” by providing lessons and examples sites have used to implement an effective system of care. View the accompanying webinar [*Building Hope for Family Healing and Recovery*](#).

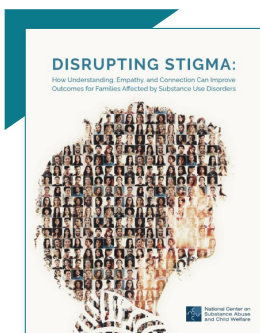
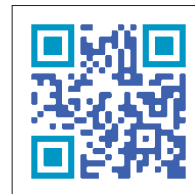




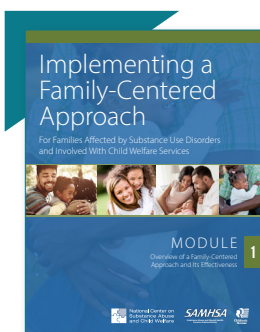
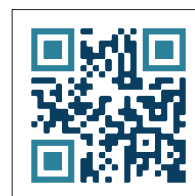
[Collaborating Across Service Systems: How to Develop a Comprehensive Data Approach for Families Affected by Prenatal Substance Exposure: A Two-Part Series](#) is for state child welfare and partner agencies (e.g., public health, maternal and child health, substance use services, mental health services) seeking to understand the scope of prenatal substance exposure in a state or other jurisdiction. View the accompanying webinar **[How to Use Data for Change: Improving Outcomes for Families Affected by Substance Use](#)**.



Children and Family Futures' **[Comprehensive Framework to Improve Outcomes for Families Affected by Substance Use Disorders and Child Welfare Involvement](#)** contains a set of proven policy and practice strategies. Communities may use these strategies to improve outcomes with equity for all children, parents, and families involved with child welfare—who are also affected by trauma, SUDs, and mental health disorders. The framework offers five system-level policy efforts and five practice strategies and innovations that lead to improved equitable outcomes for children and families.

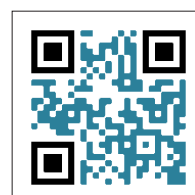


[Disrupting Stigma: How Understanding, Empathy, and Connection Can Improve Outcomes for Families Affected by Substance Use Disorders](#) supports cross-system collaborative teams in their work to reduce stigma in interactions, expectations, and policies affecting families. This brief provides several strategies, including how to intentionally use language to fight stigma and facilitate engagement with parents and family members affected by SUDs. View the accompanying webinar **[Disrupting Stigma: A Virtual Conversation](#)**.



[Implementing a Family-Centered Approach Modules](#) provide information for collaborative partners at all levels to improve systems, services, and outcomes for children and families affected by SUDs. View the accompanying webinar **[Family-Centered Approach for Families Affected by Substance Use Disorders](#)**.

- Module 1: **[Overview of a Family-Centered Approach and Its Effectiveness](#)**
- Module 2: **[On the Ground: Family-Centered Practice](#)**
- Module 3: **[Collaboration to Support Family-Centered Practices at the County and State Level](#)**



[Key Considerations to Applying an Equity Lens in Collaborative Practice](#) helps collaborative teams formally assess existing policies to determine if and how they contribute to disproportionate and disparate outcomes for families. Teams working through the “Questions to Consider” learn to apply an equity lens to collaborative policies and practices.





View these webinars to learn more about collaborative practice:

Building Hope for Family Healing and Recovery highlights concrete strategies collaboratives can use to improve outcomes for families affected by substance use and mental health disorders. Topics include: 1) an overview of the framework used to create the 10 Essential Pillars of an Effective System of Care; 2) a description of the purpose, activities, outcomes, and lessons from the federally-funded Regional Partnership Grant (RPG) and In-Depth Technical Assistance (IDTA) initiatives; and 3) lessons and strategies to implement the 10 pillars from IDTA and RPG sites.

Disrupting Stigma: A Virtual Conversation examines how to create understanding, empathy, and connection to improve systems and services for families. The webinar: 1) highlights how stigma affects professionals, families, and existing institutions and structures; 2) identifies how bias, stereotypes, and stigma develop; and 3) offers strategies to effectively modify policy and practice—while also discussing experiences and lessons on responding to stigma—to improve family engagement, treatment, child welfare practice, and ultimately, overall family well-being.

Successful Collaboration: Top Down or Bottom Up? Both! discusses the lessons and successes of implementing policy and practice change. Panelists illustrate how sustaining system-level change: 1) maximizes implementation efforts, and 2) ensures programs remain effectively and equitably delivered and sustained—from the top down AND bottom up.

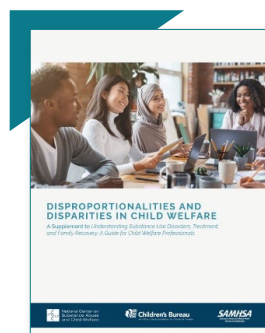


WORKFORCE DEVELOPMENT: Understand the Complex Needs of Parents and Families

NCSACW offers **free** discipline-specific [online tutorials](#) focusing on the fundamentals of child welfare, SUD treatment, and the courts—while also highlighting the importance of cross-system collaboration.

- *A Guide for Substance Abuse and Treatment Professionals: Understanding Child Welfare and Dependency Court**
- *A Guide for Child Welfare Professionals: Understanding Substance Use Disorders, Treatment, and Family Recovery**
- *A Guide for Legal Professionals: Understanding Substance Use Disorders, Treatment, and Family Recovery*

*Continuing Education Units (CEUs) are available upon completion.



[Disproportionality and Disparities in Child Welfare: A Supplement to Understanding Substance Use Disorders, Treatment, and Family Recovery: A Guide for Child Welfare Professionals](#) is a guide for child welfare supervisors and staff to: 1) initiate discussions to understand the link between disproportionalities, disparities, and the child welfare system; 2) recognize disproportionalities and disparities when working with families affected by SUD; and 3) implement strategies to increase engagement with families and reduce inequities.



[Child Welfare Training Toolkit](#) educates child welfare workers about substance use and co-occurring disorders among families involved in the child welfare system. The *Training Toolkit* contains information considered foundational for child welfare practice. The content is general enough for all child welfare workers. It can be tailored to the audience's experience and role in child welfare practice (such as investigations, in-home services, or ongoing case management) to enrich the learning opportunity. The 10 adaptable independent modules are:

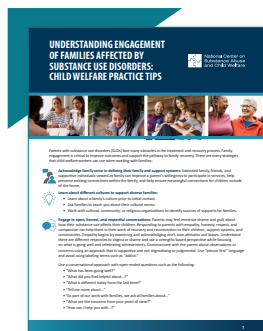
- *Module 1: Understanding the Multiple Needs of Families Involved with the Child Welfare System*
- *Module 2: Understanding Substance Use Disorders, Treatment, and Recovery*
- *Module 3: Understanding Co-Occurring Disorders, Intimate Partner Violence, and Trauma*
- *Module 4: Engagement and Intervention of Co-Occurring Substance Use, Mental Disorders, and Trauma*
- *Module 5: Case Planning Considerations for Families Affected by Parental Substance Use and Co-Occurring Disorders*
- *Module 6: Understanding the Needs of Children and Adolescents Affected by Parental Substance Use and Co-Occurring Disorders*
- *Module 7: A Coordinated Multi-System Approach to Better Serve Children and Families Affected by Substance Use and Co-Occurring Disorders*
- *Module 8: Considerations for Children and Families Affected by Methamphetamine Use*
- *Module 9: Considerations for Children and Families Affected by Opioid Use*
- *Module 10: Care Coordination Considerations for Children and Families Affected by Prenatal Substance Exposure*



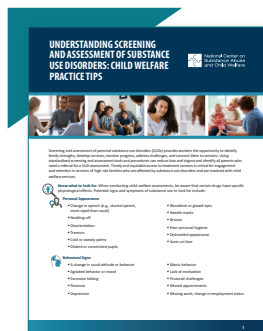
Child Welfare Practice Tips is a five-part series aimed at child welfare workers serving families affected by parental SUD. These tip sheets increase knowledge, provide strategies to improve engagement, identify opportunities to plan for safety, and highlight the importance of collaborating across systems to improve family protective capacities.



Understanding Substance Use Disorders: What Child Welfare Staff Need to Know highlights practice considerations for child welfare professionals who want to learn more about SUDs when working with families such as, common misconceptions and myths and how disparities affect family outcomes.



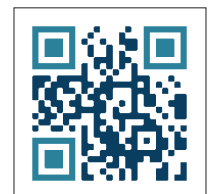
Understanding Engagement of Families Affected by Substance Use Disorders: Child Welfare Practice Tips offers practical strategies to engage families in child welfare and SUD treatment services, such as acknowledge family voice in defining their family and support systems and provide access to culturally appropriate resources.



Understanding Screening and Assessment of Substance Use Disorders: Child Welfare Practice Tips provides information about identifying and treating parental SUD, including signs and symptoms, screening practices, and referral for assessment. Timely and equitable access to SUD treatment is critical for engagement and retention in services.

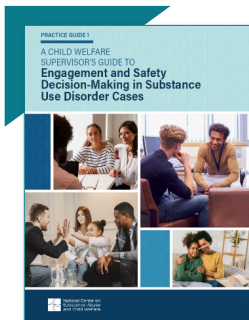


Identifying Safety and Protective Capacities for Families with Parental Substance Use Disorders and Child Welfare Involvement analyzes safety and risk factors associated with parental SUD, highlights strategies for observations, suggests questions to ask while conducting family assessments, and demonstrates how to use protective factors when working with families to support a comprehensive approach.





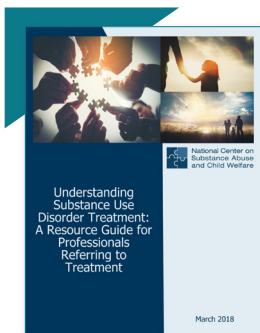
[Child Welfare & Planning for Safety: A Collaborative Approach for Families with Parental Substance Use Disorders and Child Welfare Involvement](#) provides an overview of safety factors related to parental SUDs and the unique considerations when planning for safety. It also highlights strategies to increase protective capacities and factors.



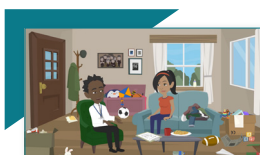
[The Child Welfare Supervisor's Practice Guides to Safety and Risk](#) supplement the [safety and risk video series](#) for child welfare professionals. The guides enable supervisors to build upon the concepts in the videos while strengthening child welfare workers' practice with families facing parental substance use.



- Practice Guide 1: [A Child Welfare Supervisor's Guide to Engagement and Safety Decision-Making in Substance Use Disorder Cases](#)
- Practice Guide 2: [A Child Welfare Supervisor's Guide to Planning for Safety in Cases When Parental Substance Use Disorder is Present](#)



[Understanding Substance Use Disorder Treatment: A Resource for Professionals Referring to Treatment](#) offers a fundamental understanding of the nature of treatment, principles of effective treatment, treatment processes, and potential funding sources. It also includes a list of questions to ask treatment providers so staff can make informed referral decisions and ensure services meet the needs of parents and families affected by SUD.



[Screening for Substance Use in Child Welfare Using the UNCOPE](#) depicts a child welfare worker demonstrating best practices while administering the UNCOPE screening tool in a situation involving suspected substance use. This short video shows workers how to: 1) incorporate this screening into their child welfare practice, 2) use motivational interviewing and open-ended questions, 3) reflect on responses, and 4) connect families to the needed services.



[Working with Child Protective Services to Support Pregnant and Parenting People, Their Infants, and Families Affected by Substance Use Disorders: A Factsheet for Health Care Providers](#) examines child welfare systems and reveals how health care providers can partner with child protective services to support the health, safety, and well-being of infants, parents, and families affected by SUD. It also describes health care providers' role in developing Plans of Safe Care (POSC).



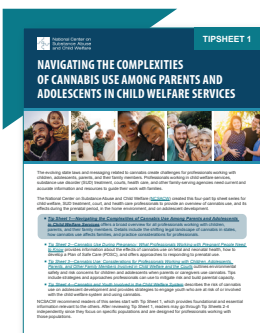
SYSTEM-LEVEL POLICY EFFORTS AND PRACTICE STRATEGY INNOVATIONS: Improve Family Recovery, Safety, Stability, and Well-Being



[Brief 1: Considerations for Developing a Child Welfare Drug Testing Policy and Protocol](#) outlines four key considerations for child welfare policymakers as they develop a drug testing policy for child welfare practice: 1) the purpose of drug testing, 2) whom to test and when, 3) method of testing, and 4) budget.



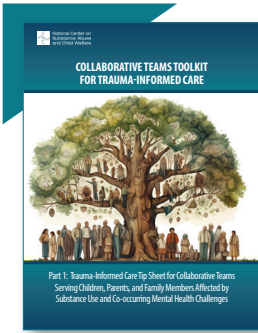
[Brief 2: Drug Testing for Parents Involved in Child Welfare: Three Key Practice Points](#) provides practice considerations to help child welfare workers implement drug testing into their daily practice, using an engagement approach that promotes family recovery and well-being.



[Cannabis Tip Sheet Series](#), a four-part resource for child welfare, SUD treatment, court, and health care professionals, examines the effects of cannabis use during the prenatal period, in the home environment, and on adolescent development.

- Tip Sheet 1: [Navigating the Complexities of Cannabis Use Among Parents and Adolescents in Child Welfare Services](#)
- Tip Sheet 2: [Cannabis Use During Pregnancy: What Professionals Working with Pregnant People Need to Know](#)
- Tip Sheet 3: [Cannabis Use: Considerations for Professionals Working with Children, Adolescents, Parents, and Other Family Members Involved in Child Welfare and the Courts](#)
- Tip Sheet 4: [Cannabis and Youth Involved in the Child Welfare System](#)





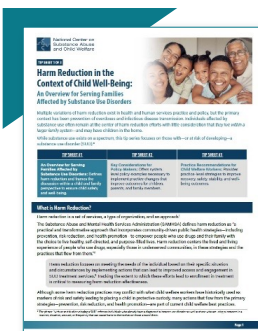
The [*Collaborative Teams Toolkit for Trauma-Informed Care*](#) helps collaborative teams 1) gain valuable insights into the interplay between trauma and substance use disorders and 2) identify, assess, and enhance their current policies and practices to be more trauma-informed and responsive to the needs of those they serve.



- Part 1: [*Trauma-Informed Care Tip Sheet for Collaborative Teams Serving Children, Parents, and Family Members Affected by Substance Use and Co-occurring Mental Health Challenges*](#)
- Part 2: [*Trauma-Informed Care Tutorial Video*](#)
- Part 3: [*Collaborative Trauma-Informed Care Tool*](#)



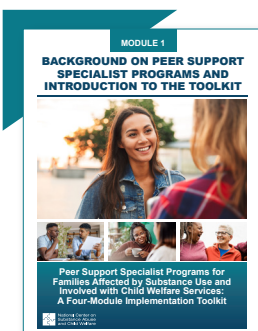
[*Engaging Parents and Youths with Lived Experience: Strengthening Collaborative Policy and Practice Initiatives for Families with Mental Health and Substance Use Disorders*](#) provides key considerations for collaboratives engaging parents involved with the child welfare system due to SUD or other mental health challenges. It also highlights considerations for those collaboratives engaging youths in the foster care system.



[*Harm Reduction & Child Safety*](#) offers an approach that meets the needs of children, parents, and family members affected by SUD while highlighting policy and practice considerations that improve recovery, safety, and well-being outcomes.



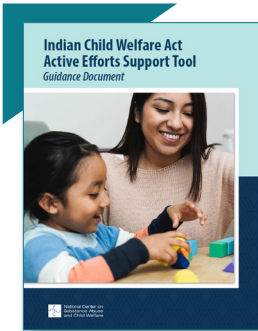
- Tip Sheet #1: [*Harm Reduction in the Context of Child Well-Being: An Overview for Serving Families Affected by Substance Use Disorders*](#)
- Tip Sheet #2: [*Harm Reduction in the Context of Child Well-Being: Key Considerations for Policymakers*](#)
- Tip Sheet #3: [*Harm Reduction in the Context of Child Well-Being: Practice Recommendations for Child Welfare Workers*](#)



[*Peer Support Specialist Programs for Families Affected by Substance Use and Involved with Child Welfare Services: A Four-Module Implementation Toolkit*](#) offers strategies to develop peer support specialist programs for parents affected by substance use—whose children and families are involved with child welfare. The toolkit, rich with on-the-ground examples and lessons from successful peer support specialist programs, offers practical strategies and resources to promote system-level policy change and practice innovations on behalf of children and families.



- Module 1: [*Background on Peer Support Specialist Programs and Introduction to the Toolkit*](#)
- Module 2: [*Building Collaborative Partnerships to Establish Peer Support Specialist Programs*](#)
- Module 3: [*Program Development Strategies to Implement Effective Peer Support Specialist Programs*](#)
- Module 4: [*Strategies for Developing the Peer Support Specialist Workforce*](#)



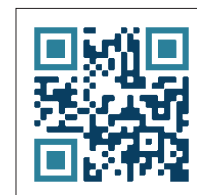
The ***Indian Child Welfare Act (ICWA) Active Efforts Support Toolkit*** provides an array of resources to help child welfare workers, substance use treatment staff, court personnel, attorneys, and healthcare professionals improve service delivery and supports to American Indian and Alaskan Native (AI/AN) families affected by substance use.



- [*ICWA Active Efforts Guidance Document*](#)
- [*ICWA Active Efforts Support Tool*](#)
- Video Learning Modules
 - Module 1: [*An Introduction to the Indian Child Welfare Act and Active Efforts*](#)
 - Module 2: [*An Introduction to the Five Points of Family Intervention*](#)
 - Module 3: [*The Role of Collaborative Partners in the Implementation of Active Efforts*](#)
 - Module 4: [*An Introduction to the ICWA Active Efforts Support Tool*](#)



Sustainability Toolkit: Five Steps to Build a Sustainability Plan for Systems Change offers collaboratives, organizations, and programs tools to create a sustainability approach for innovative projects. It includes a planning matrix, community mapping guide, cost analysis checklist, assessment, and data/funding inventory templates.



Practice-Level Strategies to Create Systems-Level Change includes three briefs that explore key components of sustaining system-level change.



- Brief 1: [*Relationships*](#)
- Brief 2: [*Resources*](#)
- Brief 3: [*Results*](#)



Strategies To Support Parents with Methamphetamine Use Disorder and Their Families provides: 1) facts about methamphetamine use, 2) effective treatment approaches, 3) information about recovery, and 4) strategies for child welfare workers and other professionals to improve outcomes for parents who use methamphetamine and their children and families.





View these webinars to learn more about systems-level policy efforts and practice strategy innovations:

Engaging Dads in Programs to Support Families Affected by Substance Use Disorders features experts from Oklahoma’s CREOKS Health Services and Arizona’s Hushabye Nursery. Panelists and NCSACW staff highlight the importance of effective practices to engage fathers in services for families affected by SUDs and mental health disorders in the perinatal period and beyond. This hourlong video focuses on challenges to father engagement while exploring strategies to improve father involvement that supports optimal child and family well-being.

Family-Centered Approach for Families Affected by Substance Use Disorders highlights innovative strategies and implementation considerations from the [*Implementing a Family-Centered Approach Modules*](#).

How to Use Data for Change: Improving Outcomes for Families Affected by Substance Use underlines a step-by-step approach to data-driven decision-making among partners. Learn which child welfare and substance use services data sets can help measure shared outcomes and launch a cross-sector approach to improving outcomes for these children and parents.

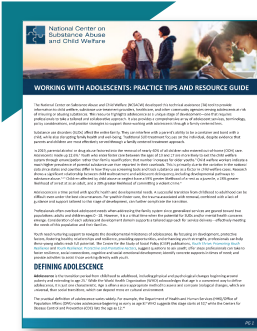
How Using Contingency Management Can Support Families Affected by Substance Use Disorders provides: 1) an overview of contingency management, including implementation with different cultural populations, 2) the implementation experience of a Regional Partnership project (Montefiore Medical Center), 3) a closer look at the myths and stigma associated with contingency management, and 4) practical strategies that agencies can use to implement contingency management.

CHILDREN AND FAMILIES AFFECTED BY PARENTAL SUBSTANCE USE: Help Communities Strengthen Their Response



Supporting Children Affected by Parental Methamphetamine Use explores the effects that parental methamphetamine use can have on a child’s health and well-being. It includes strategies for child welfare staff and other professionals who work with families affected by parental methamphetamine use.





[Working with Adolescents: Practice Tips and Resource Guide](#) contains tips and resources for child welfare, substance use treatment providers, health care professionals, and other community agencies serving adolescents at risk of misusing substances.



 ***View these webinars to learn more about the needs of children affected by parental substance use:***

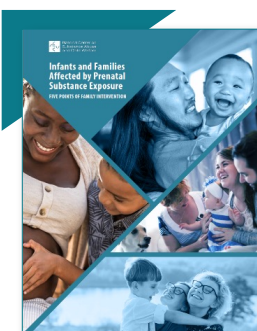
[Meeting the Moment: How Child Welfare and Substance Use Disorder Treatment Professionals Can Address the Needs of Adolescents at Risk of Suicide and Mental Health Concerns](#) highlights the alarming number of adolescents at risk for substance use, suicide, trauma, and mental health concerns. This webinar focuses on identifying adolescents at risk; prevention-based interventions; and key strategies and resources to promote resilience, recovery, and positive youth development for adolescents involved in child welfare.

[Substance Use and Mental Health Disorders: Supporting Kinship Families](#) focuses on the unique challenges that arise when parents of children in care have a substance use or mental health disorder. Challenges include: 1) ensuring access to specific developmental services for infants and children with prenatal substance exposure; and 2) tending to children’s emotional, physical, and behavioral issues across developmental stages.

Infants Affected By Prenatal Substance Exposure

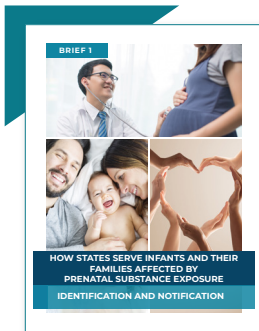


[Fetal Alcohol Spectrum Disorders: Child Welfare Practice Tips](#) helps child welfare professionals who serve children and families affected by alcohol use disorder. This tip sheet provides a broad overview of fetal alcohol spectrum disorders (FASD) treatment options; effects on child development; and child welfare practice strategies that support infants, children, and families with a family-centered approach.



[Infants with Prenatal Substance Exposure and their Families: Five Points of Family Intervention](#) identifies key moments when agencies can best improve outcomes for: 1) infants with prenatal exposure, 2) pregnant and parenting individuals with SUDs, and 3) their families.

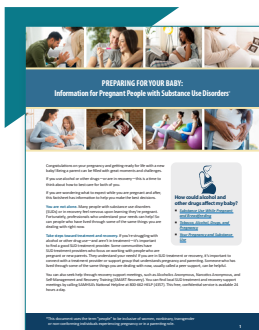




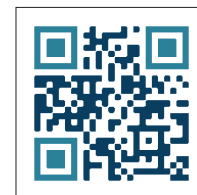
[How States Serve Infants and Their Families Affected by Prenatal Substance Exposure](#) stems from NCSACW’s review of states’ Annual Progress and Services Reports (APSRs). These briefs pertain to Section 503: “Infant Plan of Safe Care” of the Child Abuse and Prevention Treatment Act.



- Brief 1: [Identification and Notification](#)
- Brief 2: [Plans of Safe Care Data and Monitoring](#)
- Brief 3: [Lessons from Implementation of Plans of Safe Care](#)



[Preparing for Your Baby: Information for Pregnant and Parenting People with Substance Use Disorders](#) includes information and resources on common SUD treatment questions, POSC, and child welfare/child protective services. This guide helps pregnant and parenting people affected by SUD understand the child welfare system and how to prepare for their baby’s safe and healthy arrival.



[Understanding Fetal Alcohol Spectrum Disorders for Substance Use Treatment Professionals](#) informs those who treat: 1) parents with alcohol disorders and other SUDs, and 2) infants and children who may face prenatal alcohol exposure. The tip sheet offers a broad overview of FASD, including symptoms and effects, screenings, plus helpful support and interventions. It also highlights signs of FASD among adults in treatment.



View these webinars to learn more about infants with prenatal substance exposure:

[A Mother-Centered Approach to Treat Neonatal Abstinence Syndrome](#) discusses how to reduce infants’ lengths of stay in the hospital by transitioning to a “tasks for infants” model (eating, sleeping, and consoling).

[Changing How We Treat Neonatal Abstinence Syndrome: A Quality Improvement Approach](#) highlights: 1) Tampa General Hospital’s Neonatal Intensive Care Unit (NICU)—specifically, its culture and practice changes when working with prenatal substance exposure, and 2) its collaborative partnership with Florida’s Department of Health. The webinar also provides an overview of neonatal abstinence syndrome (NAS), the Florida Perinatal Quality Collaborative (FPQC), as well as practice changes and provider training in the NICU.

[Common Developmental Trajectories of Children with Fetal Alcohol Spectrum Disorder](#): Dr. Douglas Waite describes the effects of prenatal alcohol exposure on neurodevelopment, traces the brain-based developmental and behavioral manifestations of prenatal alcohol-related brain injury across childhood and adolescence, and highlights similarities and differences between other neurodevelopmental disorders, such as autism and ADHD.

Fetal Alcohol Spectrum Disorder: Bending the Trajectory: Dr. Douglas Waite discusses the prevalence of FASD, the importance and challenges of early identification/screening, and how specific interventions can help support child development.

Guidance from the American Academy of Pediatrics on Neonatal Opioid Withdrawal Syndrome provides: 1) current information on the opioid crisis, 2) implications for the mother/infant dyad, and 3) an overview of the American Academy of Pediatrics' revised guidance on neonatal opioid withdrawal syndrome.

Newborns Exposed to Substances: Understanding Their Needs and Supporting Their Caregivers: Dr. Stephen Patrick shares information on meeting the needs of infants with prenatal substance exposure and what health care for these children should include. He also discusses Firefly, a program at Vanderbilt University Medical Center that works to reduce the toll opioids take on pregnant/postpartum women and their infants.

Screening, Assessing, and Treating Pregnant Women with Substance Use Disorders: Dr. Mishka Terplan discusses his research and clinical work with pregnant individuals facing SUD. This webinar explores screening for SUD during pregnancy, engaging women in treatment, and providing patient- and family-centered postpartum care.

The Management of Care for Pregnant Women with Opioid and Other Substance Use Disorders explains: 1) strategies for working with addiction medicine physicians, 2) the role obstetricians play alongside child welfare agencies to develop POSC in the prenatal period, and 3) how to support women and infants in the important "fourth trimester."

PLANS OF SAFE CARE: Use a Collaborative Approach to Improve Outcomes



Plan of Safe Care Expert Videos Series is a four-part resource developed by NCSACW with support from the Vermont Oxford Network (VON). The videos cover POSC and Family Care Plan implementation while examining the role health care providers play in collaborative initiatives to improve outcomes for infants, parents, and families affected by prenatal substance exposure. The four modules expand on the Child Abuse Prevention and Treatment Act as it relates to: 1) infants affected by prenatal substance exposure, 2) determining who needs POSC and how notifications differ from child protection services reports, 3) collaborating with community partners to implement POSC, and 4) developing and using POSC as a care coordination process during pregnancy, birth, and infancy. Each module contains subject matter content, on-the-ground examples, and questions health care providers can ask collaborative teams engaged in this work.





[Plan of Safe Care Learning Modules](#) is a five-part series on POSC for infants born with and identified as affected by substance use or withdrawal symptoms—either from prenatal drug exposure, FASD, or their affected family or caregiver. View the accompanying Introduction to the [Plan of Safe Care Learning Modules](#).



- Module 1: [Preparing for Plan of Safe Care Implementation](#)
- Module 2: [Collaborative Partnerships for Plans of Safe Care](#)
- Module 3: [Determining Who Needs a Plan of Safe Care](#)
- Module 4: [Implementing and Monitoring Plans of Safe Care](#)
- Module 5: [Overseeing State Plans of Safe Care Systems and Reporting Data](#)



[On the Ground: How States are Addressing Plans of Safe Care for Infants with Prenatal Substance Exposure](#) examines a variety of comprehensive approaches to POSC. The examples can help lawmakers and agencies consider practice and policy system changes to best serve these families.



 **View these webinars to learn more about POSC:**

[A Family-Centered Approach to Implementing Plans of Safe Care for Infants and Families Affected by Prenatal Substance Exposure](#) illustrates how a family-centered approach to POSC helps states, Tribes, and communities meet the provisions of the 2016 Amendments to the Child Abuse and Prevention Treatment Act.

[Introduction to the Plan of Safe Care Learning Modules](#) highlights practice examples aligning with changes in CAPTA; these modules support family health, safety, well-being, and recovery through POSC development.

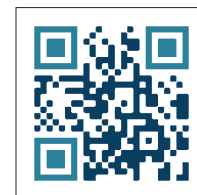
[Model Examples for Plan of Safe Care Implementation: Live Panel Discussion](#) features state and county child welfare professionals—along with health care and SUD representatives—discussing POSC development.



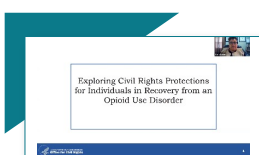
OPIOIDS & MEDICATION-ASSISTED TREATMENT: Learn About the Efficacy of MAT and MOUD (Medication for Opioid Use Disorders) Treatment



[Medication-Assisted Treatment in the Courtroom: A Primer for Judicial Professionals Serving Parents and Children Affected by Opioid Use Disorders](#) provides an overview of MAT. Topics include benefits and risks, barriers to treatment, language considerations, and the importance of collaboration. This resource highlights the unique needs of special populations (e.g., pregnant women, parents involved with child welfare, parents with co-occurring disorders).



[Medication-Assisted Treatment in the Courtroom: A Bench Card for Judicial Professionals Serving Parents and Children Affected by Opioid Use Disorders](#) is designed for judicial professionals and their collaborative partners serving families affected by opioid use disorders. The resource includes an overview of MAT, information on frequently used MAT medications, questions to facilitate discussions with court participants, and links to additional resources focusing on special populations receiving MAT.



[Opioid Use Disorder and Civil Rights Video and Webinar Series](#) informs child welfare and court professionals about federal disability rights protections that apply to certain parents with substance use disorders who are also involved with child welfare. NCSACW and the Office for Civil Rights (OCR) jointly created this multifaceted training series:



- [Part 1: Civil Rights Protections for Individuals with a Disability: The Basics](#) provides information on protections for qualified individuals with a disability in the child welfare system. It also covers federal disability rights laws.
- [Part 2: Civil Rights Protections for Individuals with an Opioid Use Disorder](#) examines SUDs as a disability while analyzing federal disability rights protections for individuals receiving MAT.
- [Medication-Assisted Treatment and Common Misconceptions](#) offers an in-depth look at MAT while noting common misconceptions about treatment. It also highlights strategies that inform effective child welfare and court practices.
- [Child Welfare Case Staffing: Social Worker and Supervisor](#) depicts a child welfare worker and supervisor staffing a case involving an individual receiving MAT while pregnant. The video covers misconceptions regarding MAT and how parents may find protection under federal disability rights laws.
- [Child Welfare Case Staffing: Child Welfare Court Case](#) depicts a hearing between a judge, a child welfare worker, and attorneys. The court and child welfare professionals discuss visitation for a mother receiving MAT.



View our additional webinar on MAT:

[Resources to Support Families in Child Welfare Affected by Opioid and Other Substance Use Disorders](#) features a variety of technical assistance resources, including publications, webinars, and tools that communities can use to better serve families in child welfare affected by SUDs.



CONTACT US

This resource is supported by contract number 75S20422C00001 from the Children’s Bureau (CB), Administration for Children and Families (ACF), co-funded by the Substance Abuse and Mental Health Services Administration (SAMHSA). The views, opinions, and content of this presentation are those of the presenters and do not necessarily reflect the views, opinions, or policies of ACF, SAMHSA or the U.S. Department of Health and Human Services (HHS).



Email NCSACW at
ncsacw@cffutures.org



Visit the website at
<https://ncsacw.acf.hhs.gov/>



Call toll-free at
866.493.2758



National Center on
Substance Abuse
and Child Welfare

